

## TUITION FEES ~ 2024



## VOCATIONAL PROGRAMMES



### THE FOLLOWING INFORMATION IS EXTRACTED FROM THE COLLEGE FEE POLICY

For full details please refer to the College Website ([www.northlink.co.za](http://www.northlink.co.za))

#### ADMINISTRATION FEES (Foreign students - including SADC)

Foreign and SADC students will be levied a non-refundable administration fee of R875 for each academic block.

#### MINIMUM PAYMENT OF REGISTRATION

To comply with the College registration requirements and be enrolled in a programme, the student will be required to pay a determined minimum amount as indicated in the fee structure.

#### METHODS OF PAYMENT

If a payment plan option is requested, such a request must be accompanied by a completed Financial Agreement for the applicable academic year.

The balance of funds need to be paid over 3 to 10 months pending the duration of the course. These payments will require debit orders arrangement.

For full details refer to the Tuition Fees Policy. A discount of 5% on all Occupational Programmes will be applied if fees at registration is paid in full by self funded students.

A payment plan option is only available to South African citizens.

At registration, all NSFAS Students will be required to sign an Acknowledgment of Registration Conditions document. Unfortunately, financial aid/ bursaries are not available to international students.

#### PAYMENT OF FEES BY COMPANIES

All requests, by commercial entities to enrol students at their cost, for any programme/ period of study written or otherwise, is to be accompanied by the full payment of fees upon registration. All refunds will only be paid back to the Company.

#### FOREIGN STUDENTS

Foreign students are classified as non-South African citizens other than refugees. All foreign students and refugees shall pay the full fees before receiving an acceptance letter which is required to enrol at Northlink College. All refunds will only be paid back to the country of origin. Levies, where applicable, are included in the course fees and are not refundable upon cancellation.

#### CANCELLATION / TERMINATION OF A COURSE

A student who terminates his/her course or subject must inform the Programme Manager. Absconding from class does not constitute a formal cancellation. Therefore, a student will remain liable for the full payment of fees. When terminating a course after registration, the student will be held liable for all outstanding fees and stipends. If the student is funded by a Employer, the College must be notified in writing that the Employer is undertaking to pay registration and course fees for the year of study within a specified time period.

A student is liable for the full payment of residence fees for the duration of their stay. No refund will be granted to students who vacate the residence at any time.

Students may be prohibited from writing examinations and results may be withheld if the course fees are not paid in full. Students will not be allowed to register for the following trimester, semester or year if their fees are not paid in full. The student or parent(s) or guardian(s) is personally liable for the outstanding fees. Defaulting on payment arrangements will result in legal action to recover all fees. For further guidance see College Policies on fees.

## 2024 STUDENT ELIGIBILITY CRITERIA FOR THE DHET TVET COLLEGE BURSARY

### National Student Financial Aid Scheme (NSFAS)

To apply for a NSFAS Bursary, a student must meet the following eligibility criteria:

1. Only South African citizens are eligible for this bursary scheme which is only applicable for Vocational Programmes. For Occupational Programmes, please consult the Campus you are enrolling at.
2. Refer to NSFAS Eligibility Criteria and Conditions for Financial Aid Policy, as amended to be read in conjunction with NSFAS process requirements. (Refer to [www.nsfas.org.za](http://www.nsfas.org.za)).
3. A student must be registered or intending to register for a NC(V), Prevocational Learning Programme (PLP), Report 191 programme and/ or Occupational Programmes (Centres of Specialisation) at any of the 50 Public TVET Colleges in South Africa.
4. If you require financial assistance, please ensure that you apply with NSFAS. (Refer to the NSFAS website on how to apply).
5. An ability to demonstrate potential for academic success/ or proven academic performance (academically deserving).

### STUDENT ELIGIBILITY CRITERIA FOR COLLEGE BURSARIES

College direct bursaries are available. Please apply at the applicable Campus you are being enrolled at.

### 2024 STUDENT ACCOMMODATION

For all accommodation needs, please apply at the relevant Campus you are being enrolled at.

## ADDITIONAL INFORMATION

### LANGUAGE SCHOOL

(see separate fee list)  
Please contact Tygerberg Campus.

### PART-TIME AND DISTANCE LEARNING COURSES

- Please contact the Goodwood Campus
- Distance Learning courses are also offered

### SPECIALISED COURSES

- Please refer to the College Website - [www.northlink.co.za](http://www.northlink.co.za) for all details.

### MODULAR FEES

- Please contact the relevant Campus.

# VOCATIONAL PROGRAMME FEE STRUCTURE

EXAMINATION FEES	2024 FEES	COMMITMENT FEE
• Supplementary (Per Subject)	640	Full Payment Required
NOTE: - For accommodation and related fees, please contact the Campus Administration office directly - Cancellations of course and refunds- refer to the College policies on <a href="http://www.northlink.co.za">www.northlink.co.za</a> - NSFAS Bursaries & fees are applicable to vocational programme offerings visit <a href="http://www.nsfas.gov.za">www.nsfas.gov.za</a> - Please contact the relevant Campus administration officer for details not contained herein.		
For more information visit <a href="http://www.northlink.co.za">www.northlink.co.za</a>		

## BELHAR CAMPUS

DESCRIPTION	2024 FEES	COMMITMENT FEE
<b>Nated 191 (per Trimester)</b>		
Engineering Studies N1 (Electrical)	Not On Offer	N/A
Engineering Studies N2 (Electrical)	Not On Offer	N/A
Engineering Studies N3 (Electrical)	2 440	490
Engineering Studies N4 (Electrical)	2 860	570
Engineering Studies N5 (Electrical)	2 860	570
Engineering Studies N6 (Electrical)	2 860	570
Engineering Studies N1 (Building and Civil)	Not On Offer	
Engineering Studies N2 (Building and Civil)	Not On Offer	
Engineering Studies N3 (Building and Civil)	2 440	490
Engineering Studies N4 (Building and Civil)	2 860	570
Engineering Studies N5 (Building and Civil)	2 860	570
Engineering Studies N6 (Building and Civil)	2 860	570

### Non-Nated

Installation Rules N2	2 440	490
-----------------------	-------	-----

### Centre of Specialisation (CoS) Occupational Programme (Per Year)

Bricklayer	11 480	2 300
Carpenter and Joiner	13 645	2 730
Electrician	15 300	3 060
Millwright	17 405	3 480
Plumber	13 195	2 640

## BELLVILLE CAMPUS

DESCRIPTION	2024 FEES	COMMITMENT FEE
<b>National Certificate Vocational</b>		
Engineering and Related Design Level 2	23 785	4 760
Engineering and Related Design Level 3	23 785	4 760
Engineering and Related Design Level 4	23 785	4 760
<b>Nated 191 (per Trimester)</b>		
Engineering Studies N1	Not On Offer	N/A
Engineering Studies N2	Not On Offer	N/A
Engineering Studies N3	Not On Offer	N/A
<b>Centre of Specialisation (CoS) Occupational Programme (Per Year)</b>		
Automotive Mechanic	11 810	2 360
Boilermaker	15 840	3 170
Diesel Mechanic	10 935	2 190
Welder	17 315	3 465

## GOODWOOD CAMPUS

DESCRIPTION	2024 FEES	COMMITMENT FEE
Only Online Offering for 2024 - Refer to the Campus for more information		

## WINGFIELD CAMPUS

DESCRIPTION	2024 FEES	COMMITMENT FEE
<b>National Certificate Vocational</b>		
Engineering and Related Design Level 2	23 785	-
Engineering and Related Design Level 3	23 785	-
Engineering and Related Design Level 4	23 785	-
<b>Nated 191 (per Trimester)</b>		
Engineering Studies N1	Not On Offer	N/A
Engineering Studies N2	Not On Offer	N/A
Engineering Studies N3	2 440	490
Engineering Studies N4	2 860	570
Engineering Studies N5	2 860	570
Engineering Studies N6	2 860	570

### Centre of Specialisation (CoS) Occupational Programme (Per Year)

Fitter and Turner	16 505	3 300
Mechanical Fitter	12 620	2 525

## PAROW CAMPUS

DESCRIPTION	2024 FEES	COMMITMENT FEE
<b>National Certificate Vocational</b>		
Office Administration Level 2	11 970	2 395
Office Administration Level 3	11 970	2 395
Office Administration Level 4	11 970	2 395
Primary Health Level 2	15 230	3 045
Primary Health Level 3	15 230	3 045
Primary Health Level 4	15 230	3 045
Safety in Society Level 2	12 255	2 450
Safety in Society Level 3	12 255	2 450
Safety in Society Level 4	12 255	2 450
<b>Nated 191 (per Semester)</b>		
Legal Secretary	3 620	725
Medical Secretary	5 880	1 175

### Occupational Programme (per Year)

Hairdressing - 1st year	13 215	2 645
Hairdressing - 2nd year	11 285	2 260
Hairdressing - 3rd year	13 555	2 710



## PROTEA CAMPUS

DESCRIPTION	2024 FEES	COMMITMENT FEE
<b>National Certificate Vocational</b>		
Finance Economics & Accounting Level 2	13 390	2 680
Finance Economics & Accounting Level 3	13 390	2 680
Finance Economics & Accounting Level 4	13 390	2 680
Hospitality Level 2	22 640	4 530
Hospitality Level 3	22 640	4 530
Hospitality Level 4	22 640	4 530
Tourism Level 2	17 435	3 490
Tourism Level 3	17 435	3 490
Tourism Level 4	17 435	3 490
<b>Nated 191 (per Semester)</b>		
Clothing Production N4	5 030	1 005
Clothing Production N5	5 030	1 005
Clothing Production N6	5 030	1 005
Hospitality Studies N4		
Intro N4 Food Services	8 195	1 640
Intro N4 Business Studies	3 620	725
Intro N4 Clothing Production	5 030	1 005
Prevocational Learning Programme (PLP)	6 825	1 365

## TYGERBERG CAMPUS

DESCRIPTION	2024 FEES	COMMITMENT FEE
<b>Nated 191 (per Semester)</b>		
Business Management N4	3 620	725
Business Management N5	3 620	725
Business Management N6	3 620	725
Financial Management N4	3 620	725
Financial Management N5	3 620	725
Financial Management N6	3 620	725
Hospitality Studies N4	8 195	1 640
Hospitality Studies N5	8 195	1 640
Hospitality Studies N6	8 195	1 640
Human Resource Management N4	3 620	725
Human Resource Management N5	3 620	725
Human Resource Management N6	3 620	725
Management Assistant N4	3 620	725
Management Assistant N5	3 620	725
Management Assistant N6	3 620	725
Marketing Management N4	3 620	725
Marketing Management N5	3 620	725
Marketing Management N6	3 620	725
Public Management N4	3 620	725
Public Management N5	3 620	725
Public Management N6	3 620	725
Tourism N4	7 980	1 595
Tourism N5	7 980	1 595
Tourism N6	7 980	1 595
Intro N4 Business Studies	3 620	725
Intro N4 Management Assistant	3 620	725



**“Don’t be afraid to  
give up the good to  
go for the great”  
- John D.  
Rockefeller**

© 2024/1

## **APPLY NOW**

Choose the course that will make your  
dreams a reality!

## **CONTACT US**

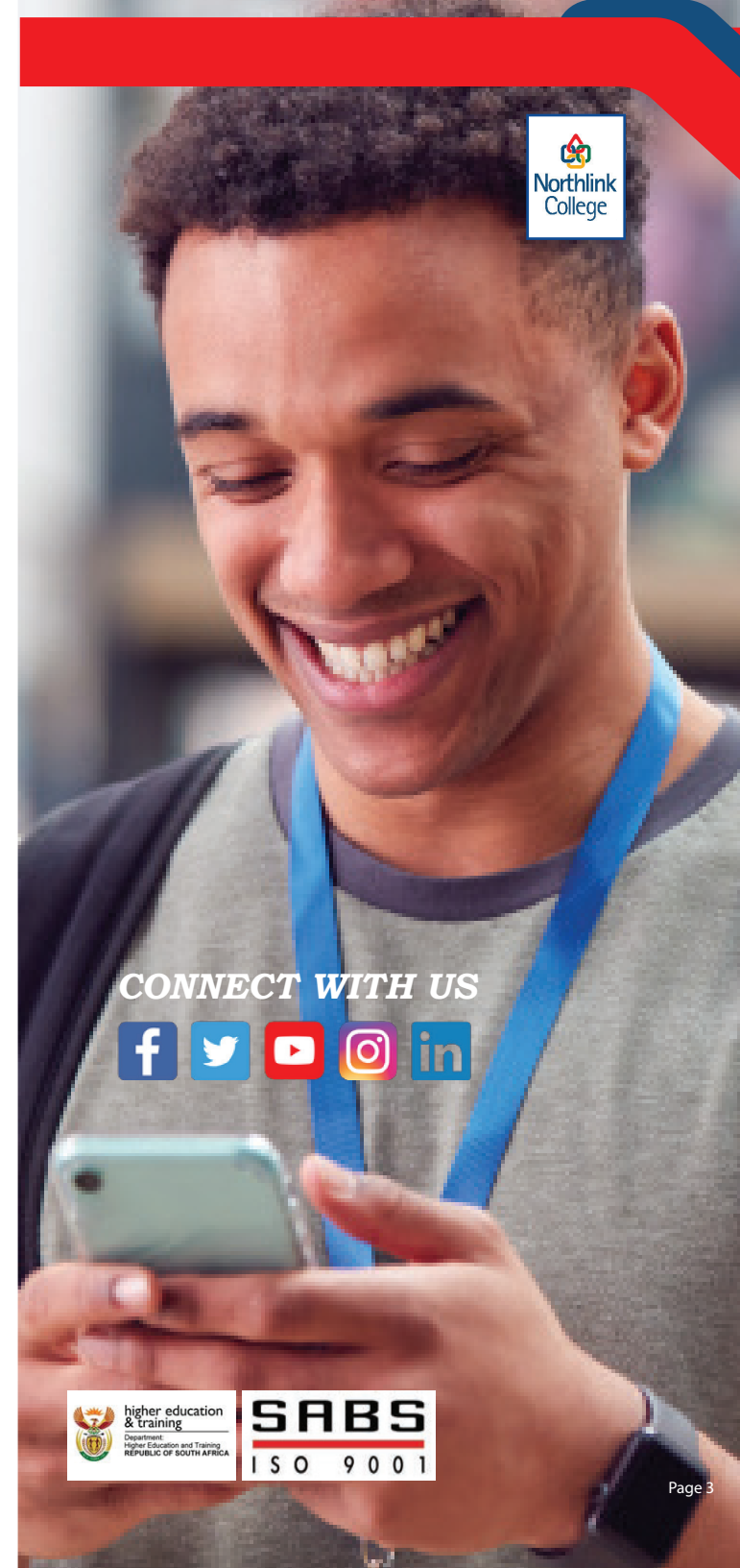
Belhar	021 952 2113
Bellville	021 951 2231
Goodwood	021 591 3181
Parow	021 931 8238
Protea	021 946 2250
Tygerberg	021 524 2200
Wingfield	021 591 9207

## **CENTRAL OFFICE**

80 Voortrekker Road, Bellville, 7530  
Private Bag X1, Panorama, 7506

021 970 9000  
info@northlink.co.za

www.northlink.co.za



## **CONNECT WITH US**

